

URBAN AND REGIONAL TRANSFORMATIONS

JULIA FREDRIKSSON, NILS BJÖRLING

julia.fredriksson@chalmers.se

nils.bjorling@chalmers.se

research and assembling urban ecologies as complex productive systems

REVIEW OF RESEARCH AND POLICY: BACKGROUND

Reformulation of the borders between centre and periphery

Increased regional imbalance

Regional development focused on strengthening regional cores

REVIEW OF RESEARCH AND POLICY: AIM

CONTEMPORARY RESEARCH AND POLICY:

centre - periphery

urban - rural

municipal - regional planning

REVIEW OF RESEARCH AND POLICY: THEMES

URBAN PERSPECTIVE

- The new economic geography and the urban creative class
- Critical geographic theory

RURAL PERSPECTIVE

- Peculiarities of rural areas
- The agrarian structural transformation

REGIONAL PERSPECTIVE

- Changed regional policies
- New-regionalisation

REVIEW OF RESEARCH AND POLICY: CONCLUSIONS

THREE DIFFERENCES (GAPS)

Between rural and urban policies, professions and disciplines.

Between territorial planning/regulation and geographic research on the (everyday) economic, social, political, ecological flows of the regionalised landscape.

Between critical and normative perspectives on economic growth as dominant objective for local and regional planning.

Regional imbalance

Focus on centres as driving forces for regional development

Power perspective: centre - periphery

How are power relations between centre and periphery handled within contemporary urban and regional planning?

CITY CENTRE DEVELOPMENT

City centres as representatives of future, development, opportunities, attractiveness and competitiveness for the whole region



The role and meaning of the periphery



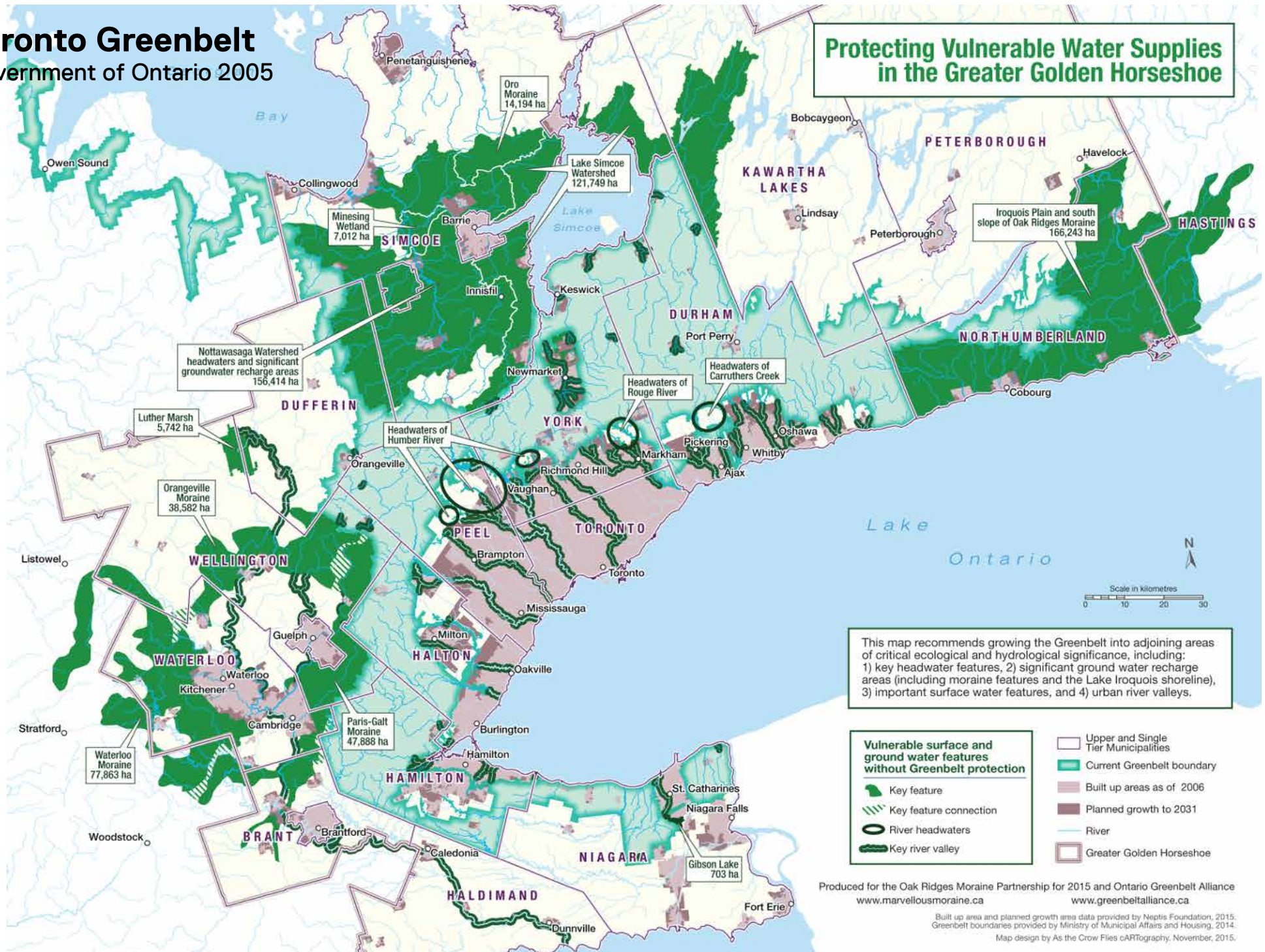
REVIEW OF RESEARCH AND POLICY: To be continued?

PLANNING THE REGIONALISED LANDSCAPE

Toronto Greenbelt

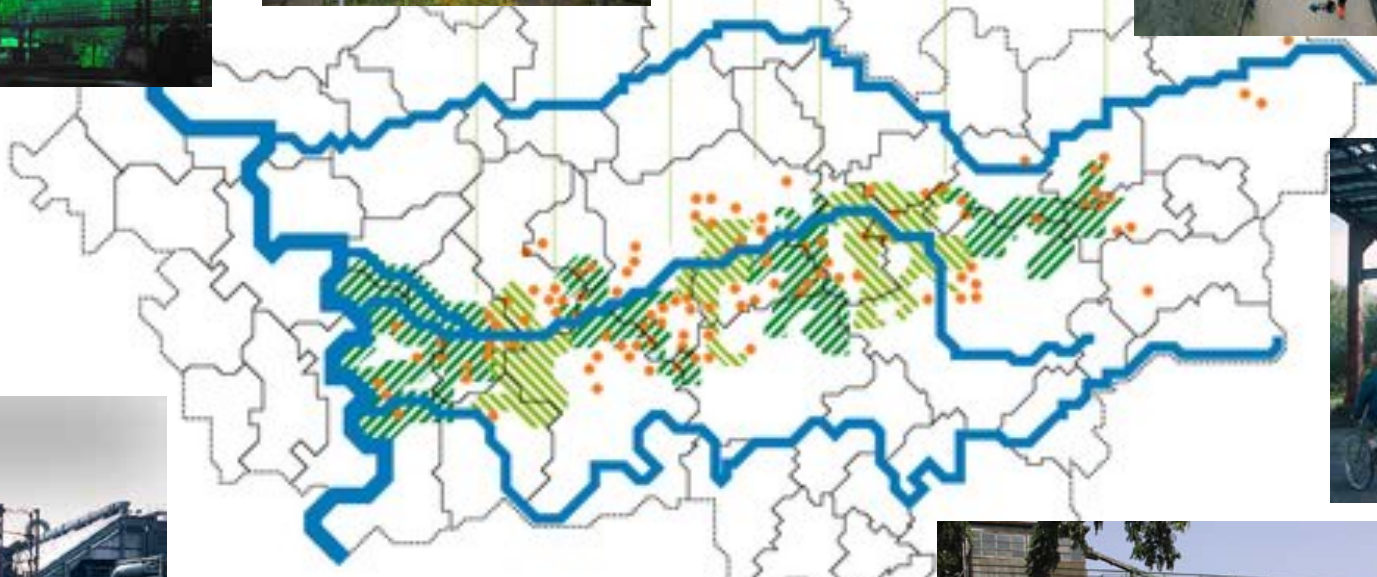
Government of Ontario 2005

Protecting Vulnerable Water Supplies in the Greater Golden Horseshoe



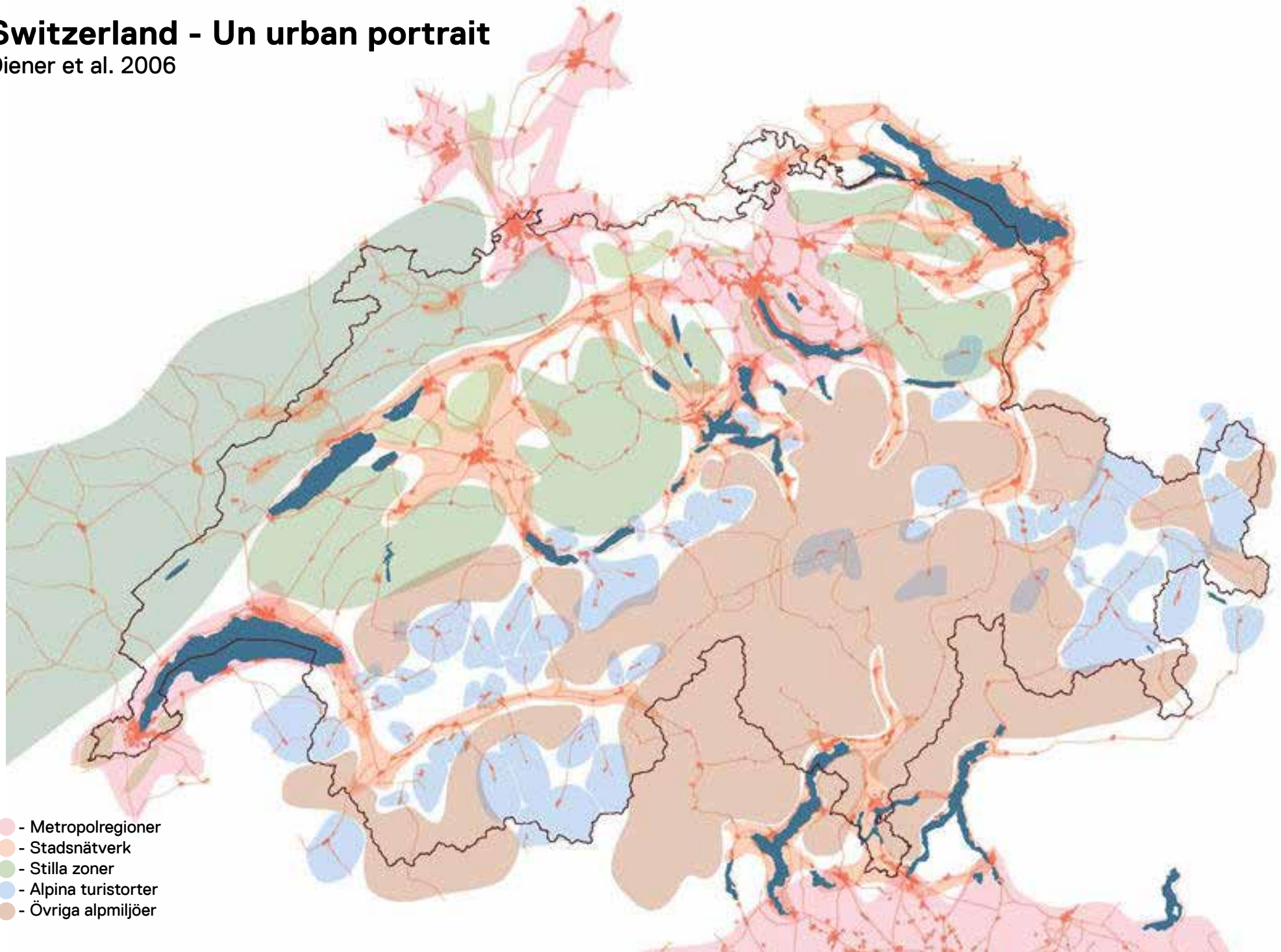
Ruhr – Emscher Park

IBA Emscher Park 1989-1998, Ruhr. 2010



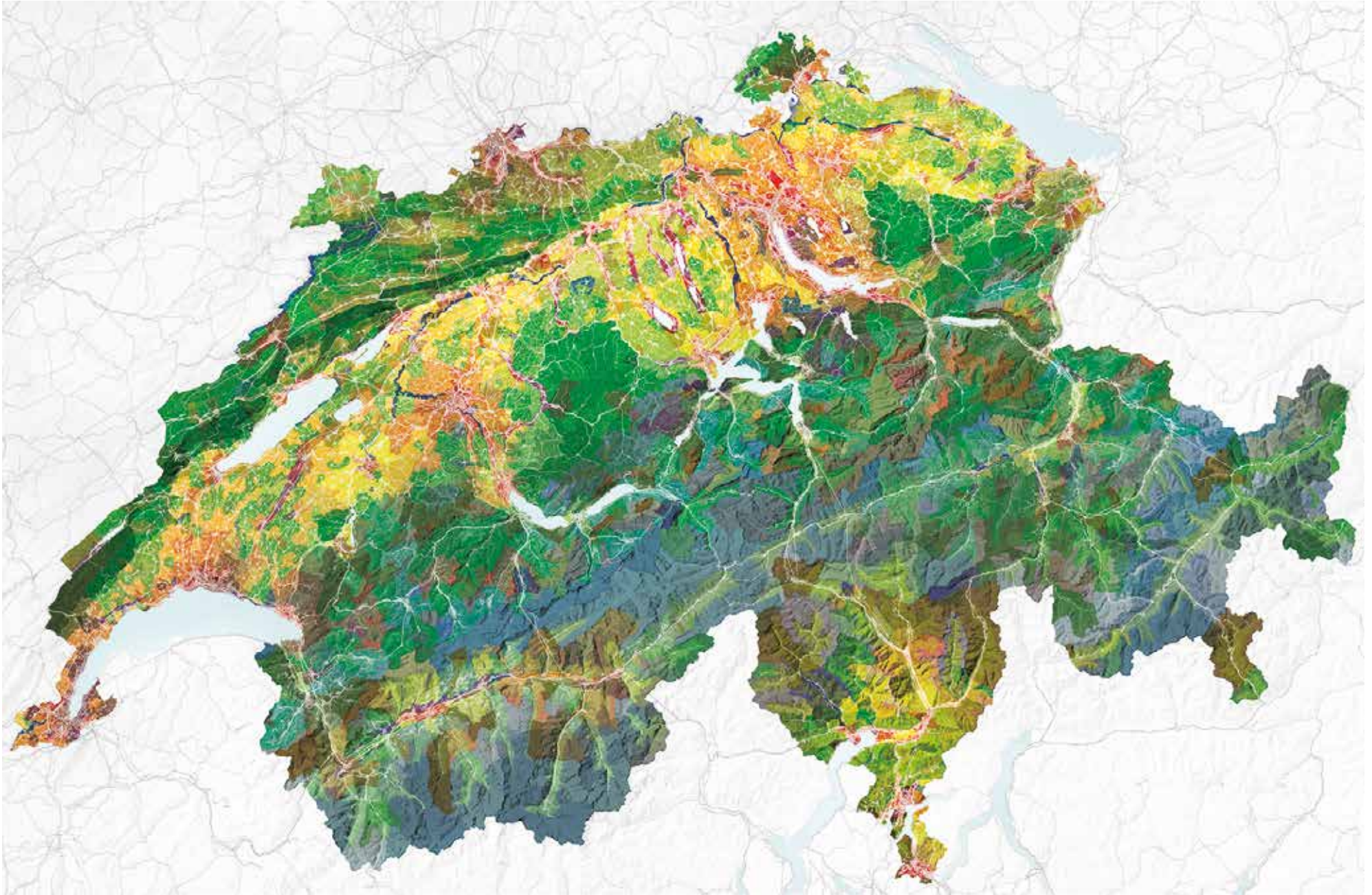
Switzerland - Un urban portrait

Diener et al. 2006

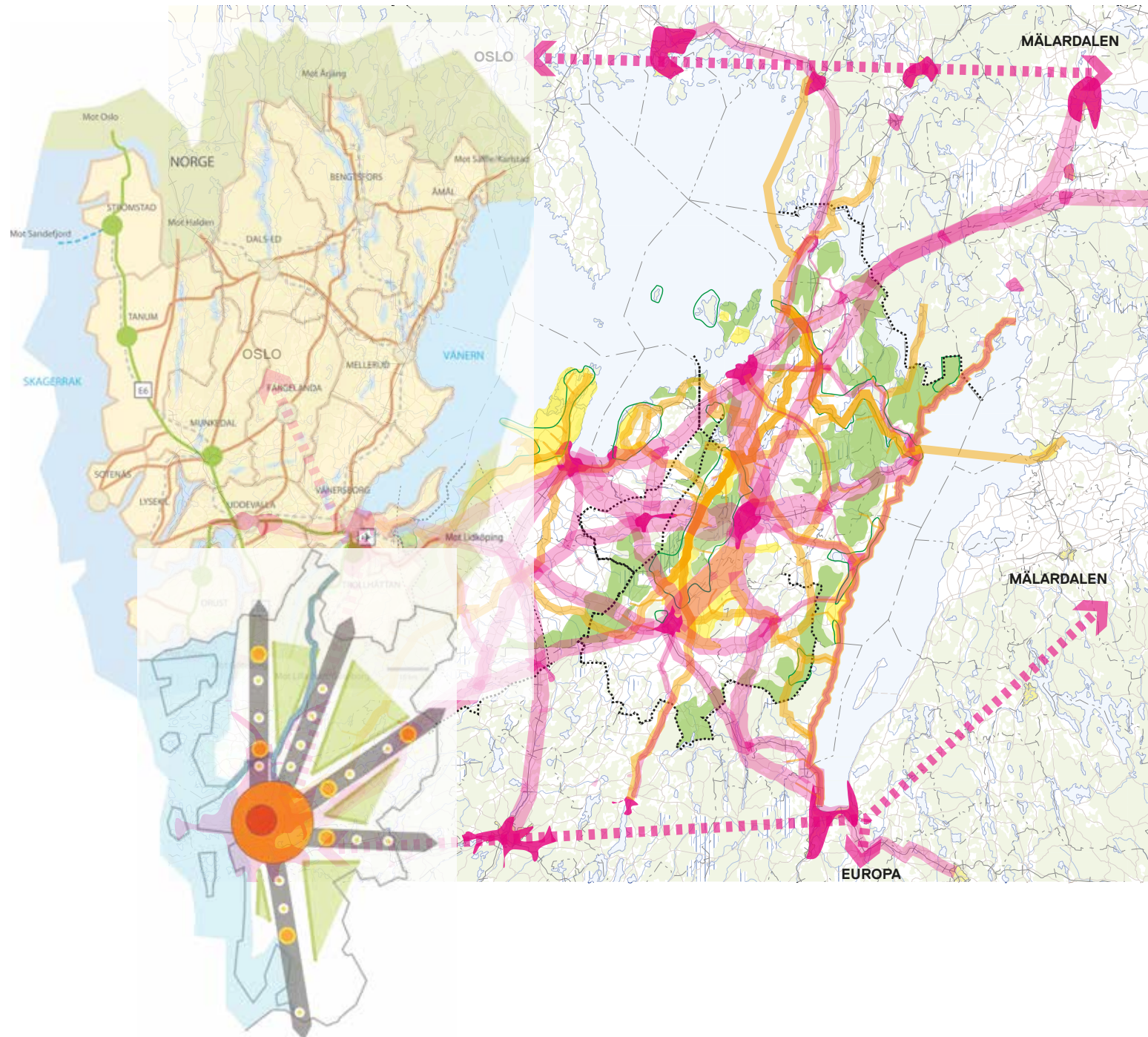


Kulturlandschaft – Switzerland

Christiansee & Wagner 2014



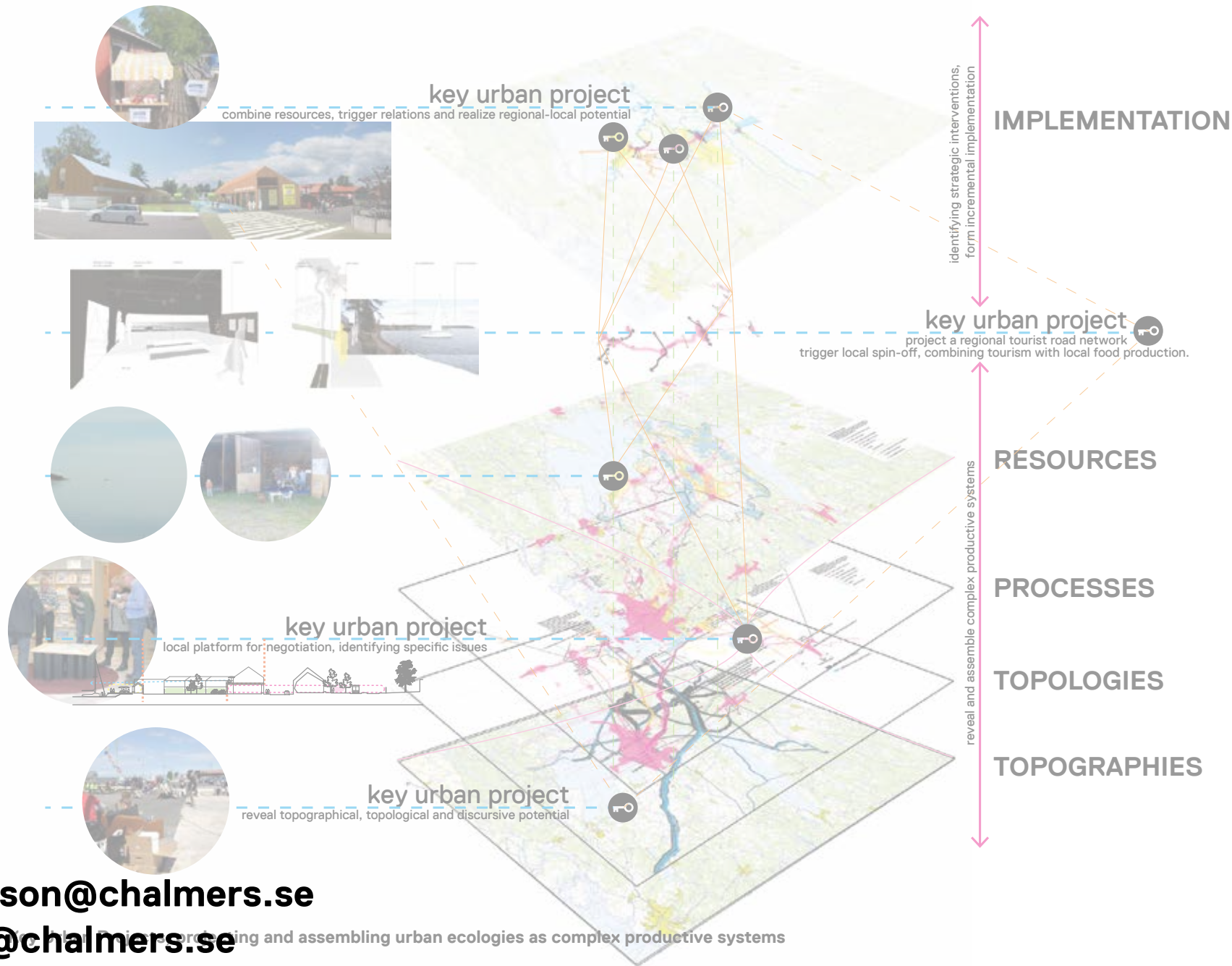
Västra götalsregionen



PLANNING THE REGIONALISED LANDSCAPE

site survey, is the key to design action: To identify urban potential requires the study of physical and discursive changes as well as local everyday practices over time, Moreover, it requires the study of conflicting material conditions, discourses, interests and practises at present.

(Tietjen, 2011, 56)



julia.fredriksson@chalmers.se

nils.bjorling@chalmers.se and assembling urban ecologies as complex productive systems