

UBUNTU GROWING MINDS

Designers and community development facilitators.

Inspired by Ubuntu

By: Olwethu Jack

BRIEF BACK GROUND ON UBUNTU GROWING MINDS



URBAN POVERTY



- South Africa is one of the fast urbanizing countries and while people are in search for resources.
- Poor access to basic services like water and sanitation characterize most informal settlements.
- Slow delivery of subsidized housing
- Services provided are deemed unsustainable due to distant location of socio-economic opportunities such as jobs, schools and hospitals making the poor poorer.

Capacity building among community project teams.

Community planning and architecture.

MTSHINI WAMI



Training community teams to design projects, implement and general project management.



Poverty in Rural Areas



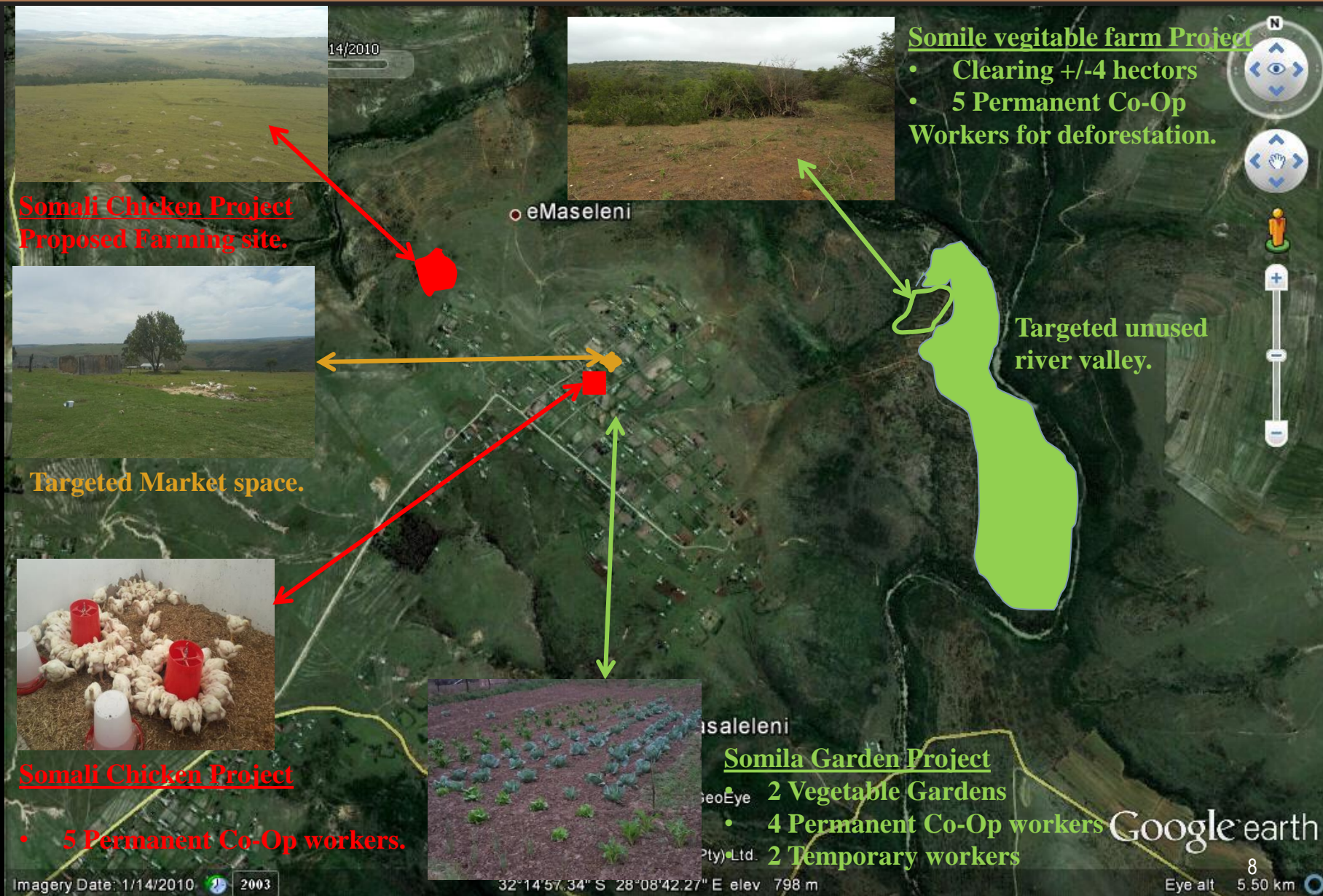
- Most of the rural settlements are characterised by poor and unsustainable development.
- The lack of sustainable development has perpetuated the income gap whilst increasing the levels of poverty.
- Basic socio-economic amenities such as Educational and Medical centre's are far from people, with very scarce transport and poorly maintained roads.
- Scarce resources = to go to cities to find better living.
- Water and sanitation is still a big problem.

Sustainable Rural Development – Somila Youth Vegetable Garden -NGQAMAKHWE - MPETA



Sustainable Rural Development – Mapping

MASALELA & MPETA



PROBLEMATIC:

- No participation or collaboration
- Lack of cultural and historical understanding
- Unethical practices
- Dangerous consequences and risk to livelihoods
- Paternalistic mind set
- Lack of self awareness and reinforcing power dynamics
- Misconceptions and false expectations
Distrust and dissolution of hope
- Not up-skilling local participants and working with unavailable resources
- Research and project fatigue producing antagonistic communities and burning bridges for future projects

GENERATIVE:

- Deep participation and collaboration
- Understanding historical, cultural and political landscape
- Practicing self-awareness and limiting paternalistic perspectives
- Respect of local knowledge and agency
- Working with and supporting local innovation
- Long term plan and strategy (infrastructure)
- Self-awareness and relationship building
- Partnering with established organizations
- Managing expectations
- Working with easily accessible resources and up skilling people so that they maybe able to continue to fix problems

UGM WAYS OF PRACTICE:

- Start by building relationships
- Remain self-aware and check our biases and assumptions
- Explore our privileges and get comfortable being uncomfortable
- Engage in deep collaboration, practice listening and being vulnerable
- Not getting stuck in a form trap (looking past the methods)
- Less about intention and more focus on paying attention
- Partner with established organizations and support local innovation
- Ensure mutual benefit
- Don't get involved in everything, if our presence will be too disruptive we will pull out or limit our engagement
- Credit all people involved, check our egos
- Complex issues are ever changing, making peace with the fact that a solution may need to change and be adapted over time

- **ASIMANGA.....**
- **WE ARE NOT WAITING.....**

- **SIYAQHUBA RHULUMENTE.....**
- **THE JOURNEY CONTINUES.....**

- **ENKOSI!!!!**
- **THANK YOU !!!!**