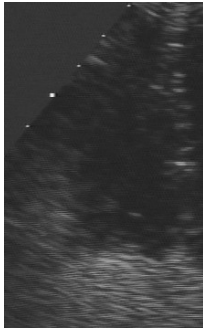


1.1 Optical flow.

In a sequence of images, object motion can be modeled by a continuous variation of image intensity as a function of position (x,y) and time (t) . Optical flow computation refers to a technique by which motion, in each image point, can be determined with respect to magnitude and direction. You will study this technique in some detail and also try it on synthetic as well as ultrasonic moving heart images.



[images](#) (243 KB)

Contact: Artur Chodorowski

E-mail: artur.chodorowski@chalmers.se