

Cells Classification

There is an ongoing contest on HEp-2 cell classification.

See <http://mivia.unisa.it/hep2contest/index.shtml>

The task is to implement some part of the image analysis and classification tasks in this contest.

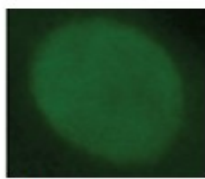
Competition task

The competition is about the recognition of the cell patterns in the HEp-2 images. In this regard the contest organizers will provide to the participants the original images together with the cells already segmented by specialists.

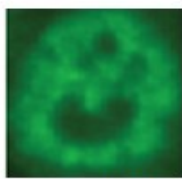
The participants are required to design and implement a pattern recognition system able to classify the pre-segmented cells belonging to HEp-2 images in one of the following pattern classes: homogeneous, fine speckled, coarse speckled, nucleolar, cytoplasmatic and centromere

Contact person: Artur Chodorowski

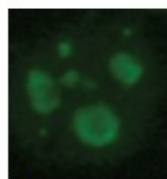
E-mail: artur.chodorowski@chalmers.se



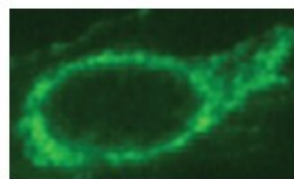
Homogeneous



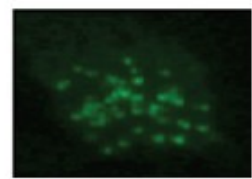
Speckled



Nucleolar



Cytoplasmic



Centromere