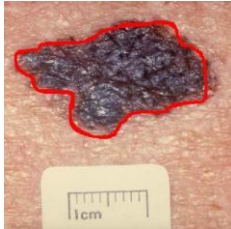


5.1.2 – Skin cancer – ABCD system.

The ABCD (Asymmetry, Border, Color, and Dimension) criteria represent a commonly used clinical guide for the diagnosis of early melanoma. The task is to implement some functions (e.g. in Matlab) that extract the features related to ABCD criteria and investigate the features' discrimination power between non-melanoma and melanoma lesions. As a training examples you will use some melanoma and non-melanoma images.



→ feature vector → scatter plots → discrimination measures

Contact: Artur Chodorowski

E-mail: Artur.Chodorowski@chalmers.se