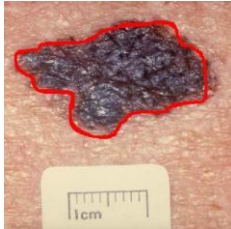


### 5.1.3 – Skin cancer classification.

The ABCD (Asymmetry, Border, Color, and Dimension) criteria represent a commonly used clinical guide for the diagnosis of early melanoma. The task is to implement a computer aided diagnosis (CADx) system using ABCD features and evaluate its performance (ROC curve). As training examples you will use some melanoma and non-melanoma images.



→ feature vector → classifier training →

evaluation of the diagnostic system (ROC curve)

Contact: Artur Chodorowski

E-mail: [Artur.Chodorowski@chalmers.se](mailto:Artur.Chodorowski@chalmers.se)