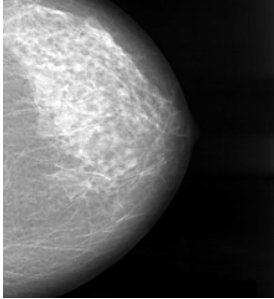


5.3 Breast Cancer Image Database.

The task is to investigate the publicly available databases of mammography images and build a local working copy of a part of some mammography database. It is also required to implement some shape feature extraction method, e.g. a method based on Fourier descriptors for shape characterization of spiculated mammography lesions.



Contact: Artur Chodorowski

E-mail: Artur.Chodorowski@chalmers.se