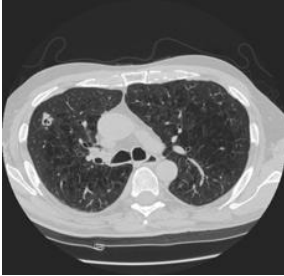


5.6 Lung nodule detection.

There is an ongoing comparative study/competition on Automatic Nodule Detection 2009. See <http://anode09.isi.uu.nl/index.php>

The task is to implement some part of the automatic detection of pulmonary nodules in thoracic CT scans, using the data from the above ANODE09 database.



Contact: Artur Chodorowski

E-mail: Artur.Chodorowski@chalmers.se