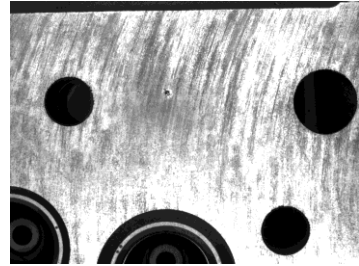


7.1 Image Enhancement for Object Detection:

Project example:

Enhancing surface defects on machined metal surface by filtering.

Machined surfaces on motor parts need to be inspected for surface defects. The metal surface has very varying properties "by nature", and the surface machineing also causes a predictable pattern on the surface. In order to do automatic surface inspection this background pattern needs to be suppressed so the defects can be securely detected. The task is to experiment with various filters to find the best possible S/N (defect to background) ratio.



Contact: Manne Stenberg

E-mail: Manne.Stenberg@chalmers.se